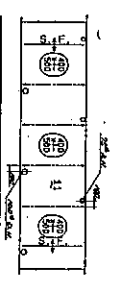
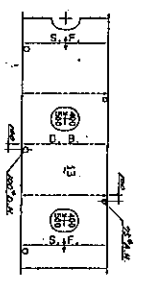


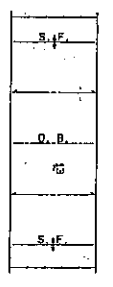
SIDE GIRDER (N.W.T.)
SIZE: 12 x 12 F.B. 15-8



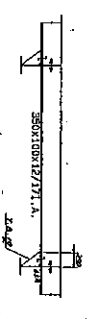
CENTER GIRDER (N.W.T.)
SIZE: 12 x 12 F.B. 15-8



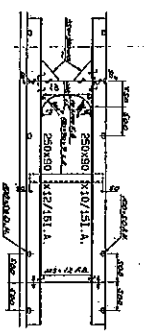
CENTER GIRDER (N.W.T.)
SIZE: 12 x 12 F.B. 15-8



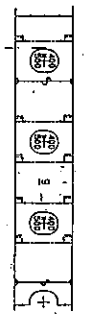
UPP. DECK LONG.



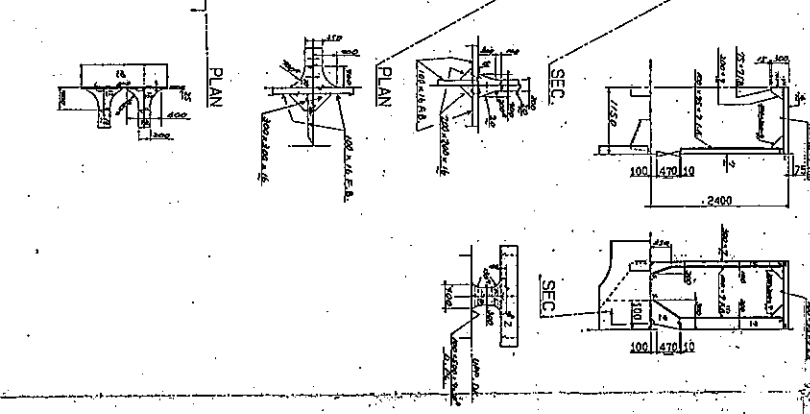
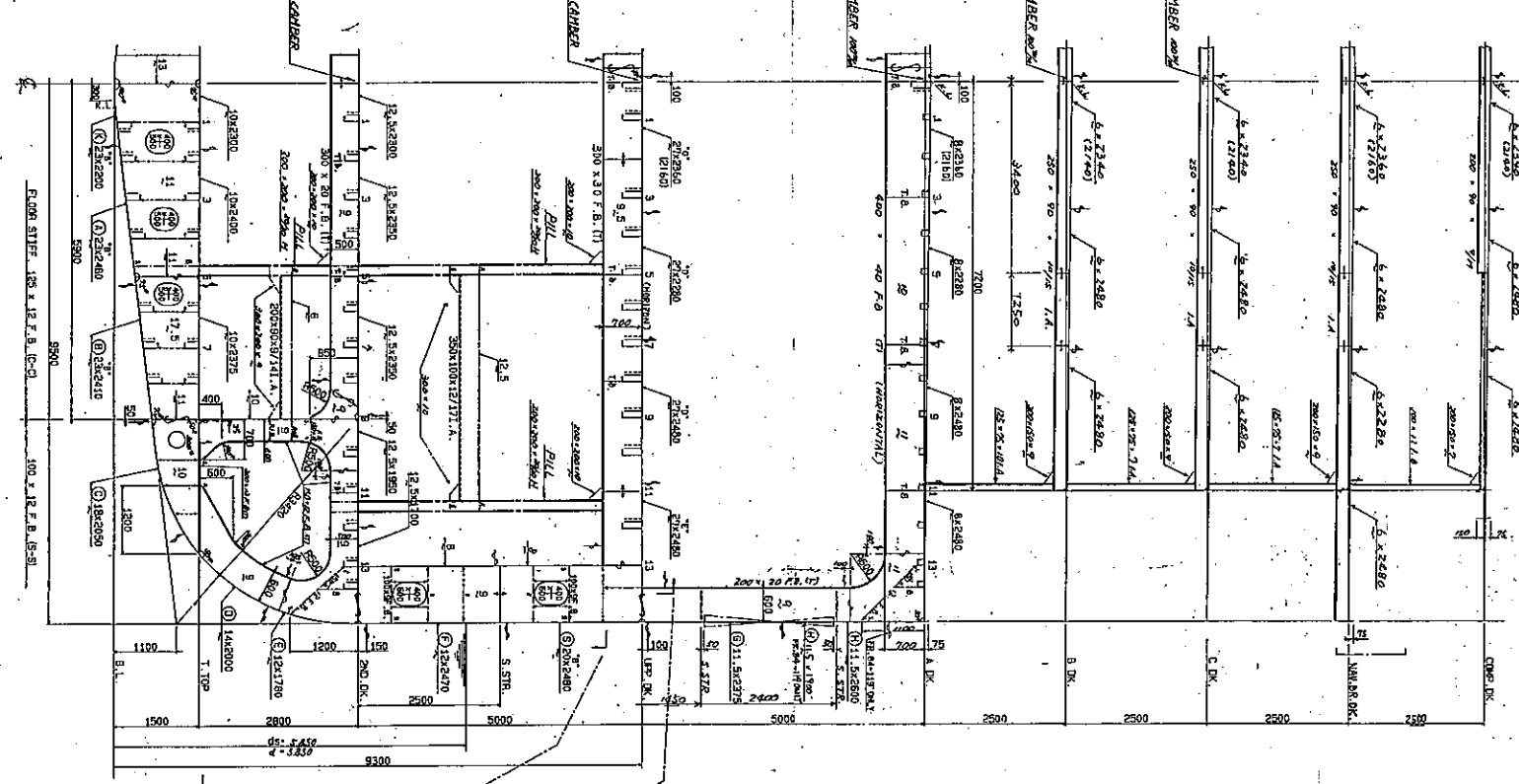
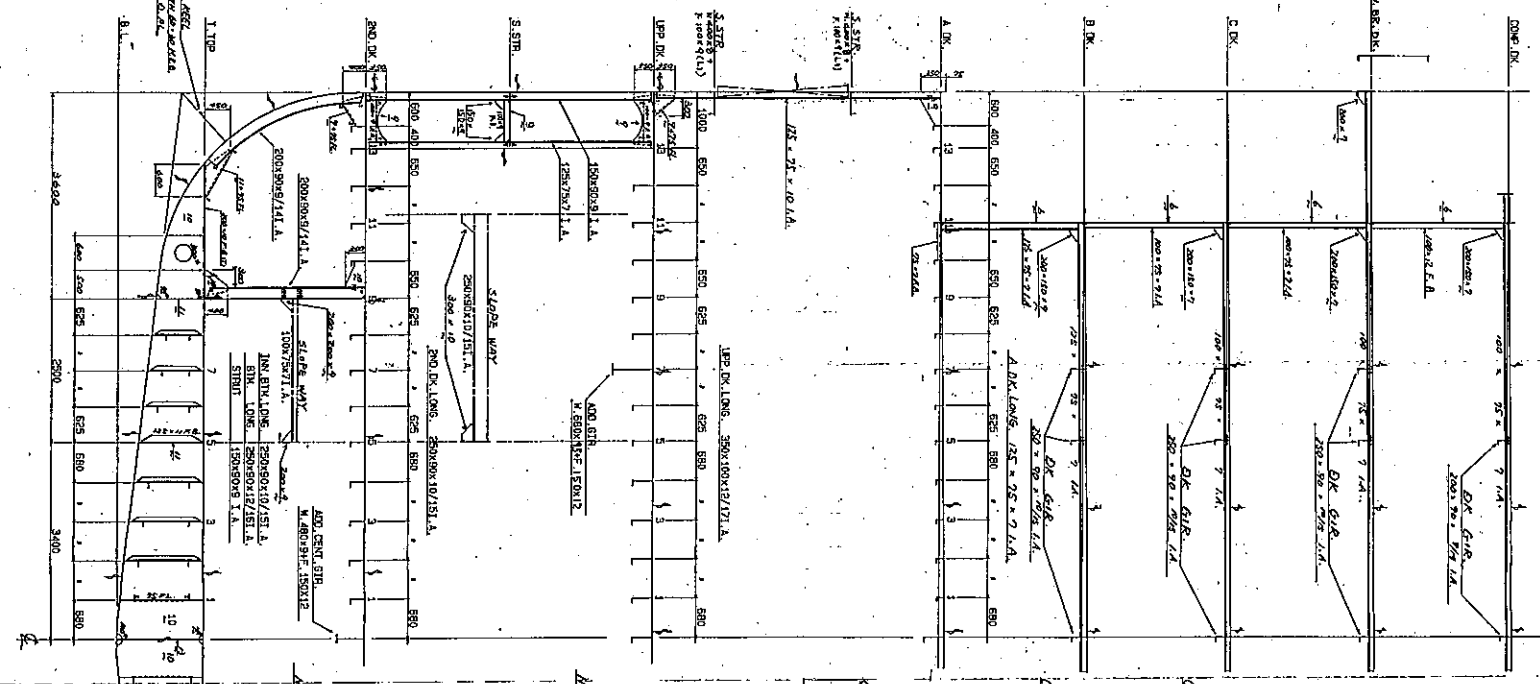
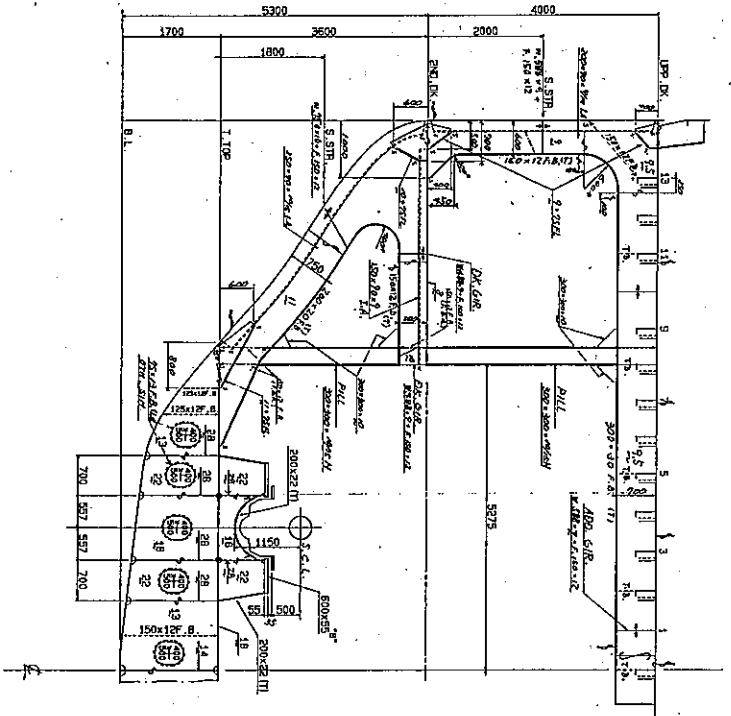
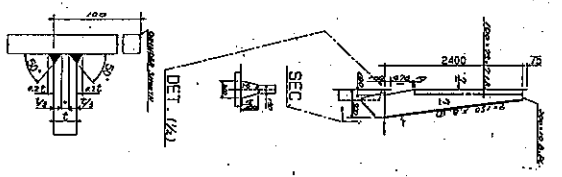
INN. BOTTOM LONG. & BOTTOM LONG.



SIDE STRINGER
SIZE: 12 x 8 F.B. 15-8



BULK HEAD (P. SIDE)



BULK HEAD (S. SIDE)

PRINCIPAL PARTICULARS

LENGTH	155' 0"
BREADTH	19' 0"
DEPTH	9' 0"
DRAFT	5' 0"
DISPL.	5,100
MAIN ENGINE	2 x 5000
SPEED	14.5 KTS

CLASSIFICATION
NK No. 1 (Roll on-Hull) off Cargo Ship Equipped
for Carriage of Vehicles (KNS)

MATERIAL NOTES
MATERIAL TO BE APPROVED WITH NK RULE
NO MARK DENOTE CLASS
"B" MARK DENOTE CLASS
"T" MARK DENOTE CLASS
"K" MARK DENOTE CLASS
DESIGNED LOAD ON CAR DECK

DECK	TYPE	LOAD
UPP. DECK	UNIFORM MAX. NET WT. LOAD	1,500 LT
INN. DECK	CAR PARK LIFT	17,500 LT
INN. DECK	RAIL	4,000 LT
INN. DECK	RAIL	11,500 LT
INN. DECK	RAIL	0,400 LT

図一面表

1. 本図はNK, 1059 用として
 船主に提出し
 平成 8 年 2 月 16 日
 完成図として

07052
 船主 株式会社
 船名 SN. 1029
 船名 7-11 - 運糧

五九〇丸
 中央横断面図
 1/50

林業船渠株式会社
 技師 伊藤
 主任 伊藤
 監工 伊藤
 平成 7 年 6 月 5 日
 出図 平成 年 月 日
 図面番号 HC 0301